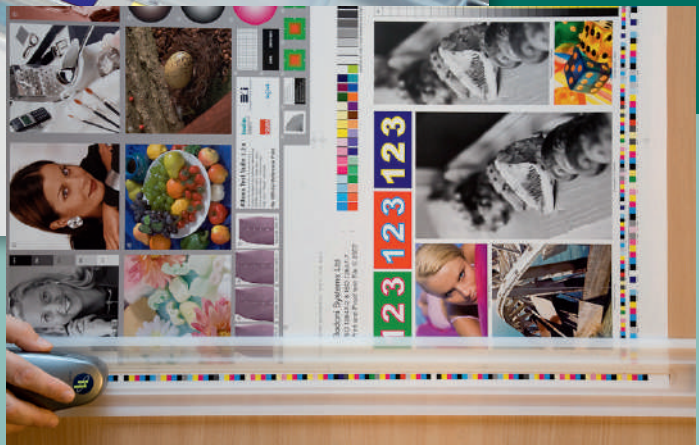


# pressSIGN



**accurate colour on press**

ISO 12647-2, 12647-3, 12647-4, 12647-6 GRACol G7, SWOP  
or any CMYK ICC profile



# press

## Accurate colour on press

pressSIGN tests and controls the litho printing process to give consistently accurate colour.

Using pressSIGN dramatically reduces make-ready times and increases print quality. Matching international printing standards such as ISO 12647 is easy.

pressSIGN uses the low cost X-Rite Eye-One Pro spectrophotometer or a variety of spectrophotometers that scan the whole press sheet and provides a step-by-step guide for accurate colour.

## Three versions of pressSIGN

Choose the version of pressSIGN that suits your needs (see the compatibility chart on page 4).

**pressSIGN-PrintBuyer** is designed for those who only need to measure the press sheet for conformity to their desired standard.

The **pressSIGN standard version** both measures the sheet and shows the operator how to adjust the density settings to hit the Lab targets and how to adjust the plate curve.

**pressSIGN-Pro** shows the operator how to adjust each ink key across the press either using the Eye-One with the extended ruler (see front cover) or automatically accepting data via an automated reader.

## Print to international or user defined standards

pressSIGN is the most effective tool for matching any printing standards.

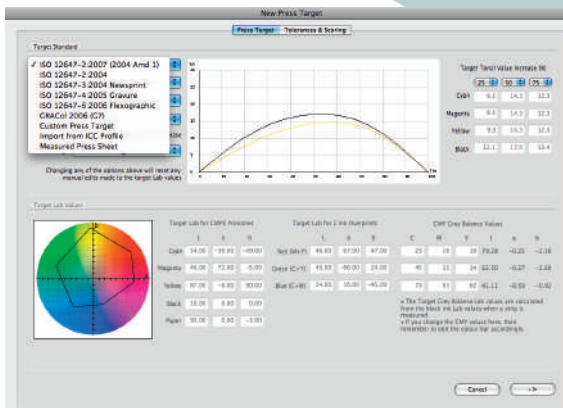
Select the international standard you want your press to match:

- ISO 12647-2 Sheet-fed or web offset
- ISO 12647-3 Newsprint
- ISO 12647-4 Gravure
- ISO 12647-6 Flexographic
- GRACoL G7 Sheet-fed or Web (SWOP)

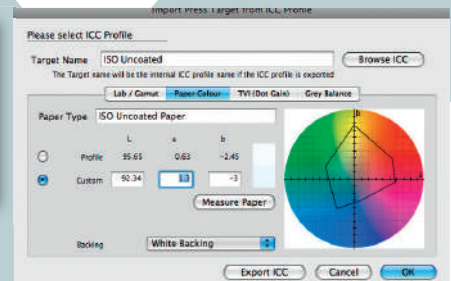
**Create your own standard** by measuring an individual or set of press sheets (average these measurements) and make this your new standard. Ideal for re-runs which are outside any international print standard.

**Import an ICC profile** and make this the press standard. Read the paper color with the Eye-One and pressSIGN adjusts the ICC profile. Export this profile for use in proofing and pre-press workflow.

**Set the tolerances and scoring:** Set the score for acceptable pass for the press sheets. pressSIGN allows you to export the standard to other users so they can match your work.



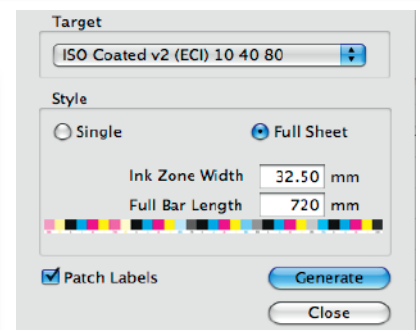
Select the press target from any international standard, a previous reading or an ICC profile



When selecting an ICC profile as the press target you can measure paper color and pressSIGN adjusts the profile. The adjusted profile can be exported for use in proofing etc.

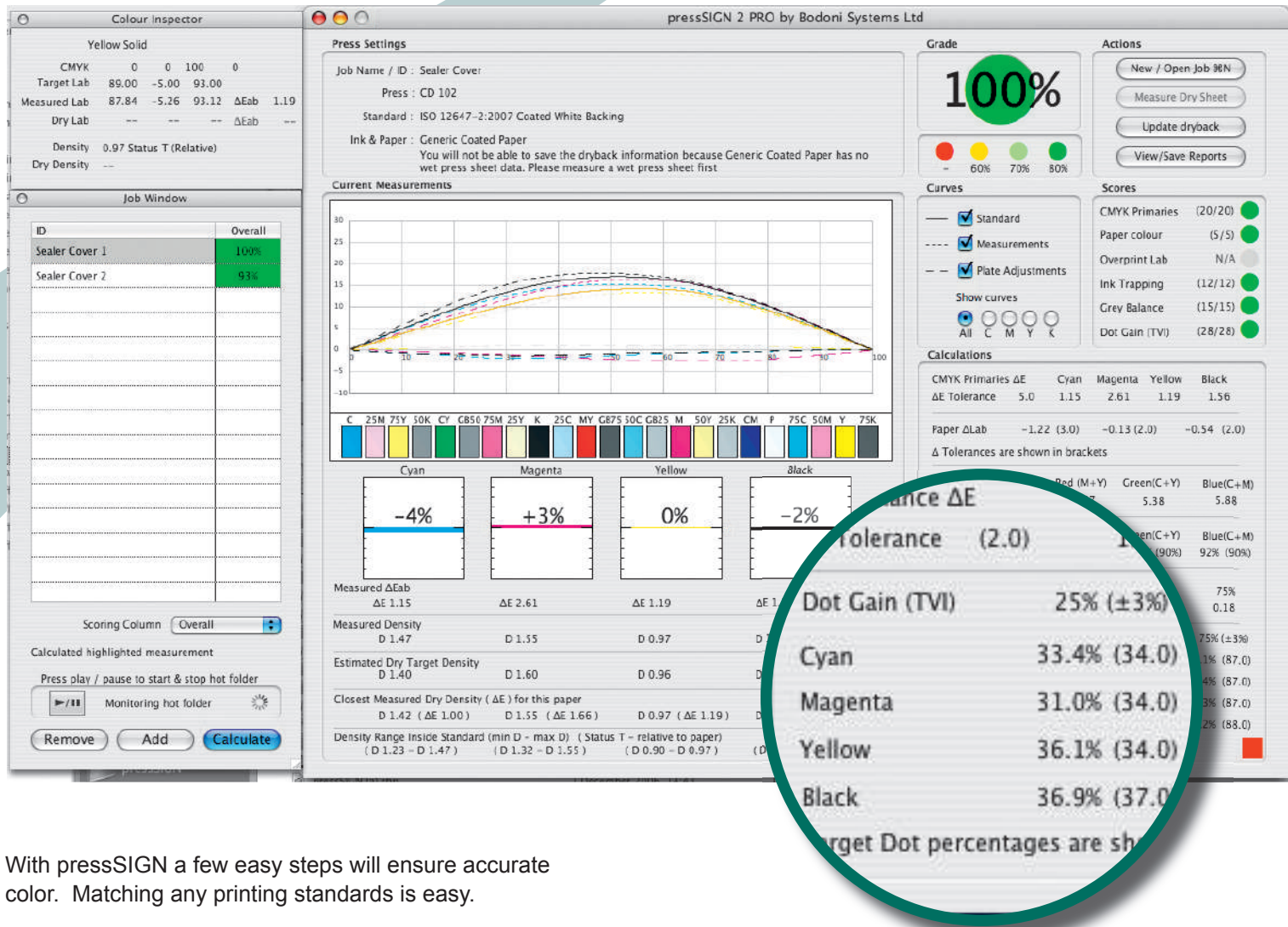


pressSIGN-Pro shows the operator how to adjust each ink key across the sheet using the Eye-One and pressSIGN extended



pressSIGN creates the color bar based on the press target

# SIGN



With pressSIGN a few easy steps will ensure accurate color. Matching any printing standards is easy.

## pressSIGN control strip

The pressSIGN single control strip can be placed anywhere on the press sheet or use the pressSIGN full width control bar. There are 23 patches that pressSIGN uses to produce its report; the solid primaries, tints at any 3 user selected percentages, with the same grey balance points and overprint/trapping.

## Adjust density correctly

The easy-to-read graphical interface shows how to adjust the ink density for each primary colour and each ink key (pro version). The software predicts the correct density for the color target. Also shown are the best density achieved so far and the acceptable density range. This means you can quickly hit the target on each colour. Use the 'Colour Inspector' for detailed information on each colour patch.

## Read the press sheet wet and dry

pressSIGN adjusts for the colour shift that takes place as the inks dry. Whatever ink or paper combination you use, you'll know you are hitting the standard while you are running the press. Read the control strip while it is still wet and pressSIGN will tell you how the press sheet will appear when dry. You can then adjust the press on-the-fly and know that your customers will receive the job they want.

## Plate adjustment curve

If the dot gain curve does not meet the standard then pressSIGN provides the correct plate adjustment curve. Export the adjustment curve directly into the most popular platesetter and filmsetter RIPs.

# accurate colour on press

pressSIGN comparison chart			
Functions	pressSIGN-PrintBuyer	pressSIGN	pressSIGN-Pro
<b>Standards</b>			
ISO 12647-2, ISO 12647-3, ISO12647-4, ISO 12647-6	✓	✓	✓
GRACol G7	✓	✓	✓
Import ICC profile/Previous Measurement/User defined	✓	✓	✓
<b>Diagnostics</b>			
Density Adjustments		✓	✓
Plate curve adjustments		✓	✓
<b>Input data</b>			
via Eye-One	✓	✓	✓
CGATS data via Intellitrac S, Komori PDCS, Heidelberg ImageControl & others			✓
<b>Measurement functions</b>			
Density	✓	✓	✓
Dot area	✓	✓	✓
CIEL*a*b* /DeltaE	✓	✓	✓
<b>Import/Export</b>			
Standards/Measurements/Dry back data/ICCprofiles/Color bar	✓	✓	✓
<b>Reports</b>			
Label	✓	✓	✓
Pdf	✓	✓	✓
<b>Auto input</b>			
Scans for CGATS data to auto input into pressSIGN			✓
<b>Views</b>			
Summary View	✓	✓	✓
Detail - view per ink key			✓

## System Requirements:

Mac:

Mac OS 10.3.9 or later

512MB RAM

2 USB Ports (for Eye One & label printer)

Colour Monitor: 1280 x 1024

GretagMacbeth Eye-One Pro

PC:

Windows 2000, XP, Vista

512 MB RAM

2 USB Ports (for Eye One & label printer)

Colour Monitor: 1280 x 1024

GretagMacbeth Eye-One Pro

Your pressSIGN approved dealer is:

**Bodoni Systems**  
the colour experts

tel: + 44 (0)1923 220530

www.bodoni.co.uk

info@bodoni.co.uk